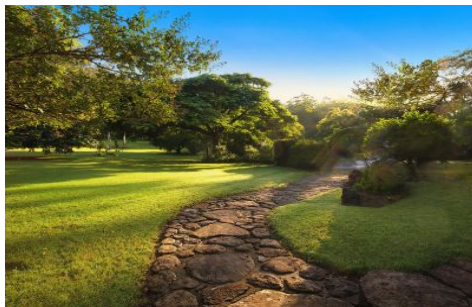


Byron Bay

Sotheby's

INTERNATIONAL REALTY



777 Wilsons Creek Road Wilsons Creek NSW

6 7 4

Commissioned in 2000 by an English heiress with no expense spared, this stunning 2.798ha of prime land was handpicked as the most breathtaking in the region. The exquisite property boasts estate-like grounds that create a peaceful, healing sanctuary and a unique place of tranquillity with private frontage onto Wilsons Creek.

Style, size, and leafy surrounds all come together in this architecturally designed, spacious home, which is perfectly elevated to take full advantage of the rainforest surrounds. Inspired by feng shui principles, the home's layout and design foster a sense of balance and harmony, seamlessly connecting indoor and outdoor spaces. Immerse yourself in the landscaped gardens, open green spaces plus a dedicated art studio, luxe barn accommodation, lock-up

[For full version visit the website](https://www.byronbaysir.com.au)

Type : House
Price : EOI guide on request
Land Size : 2.798 ha
View : <https://www.byronbaysir.com.au/sale/nsw/northern-rivers/wilsons-creek/residential/house/8135581>

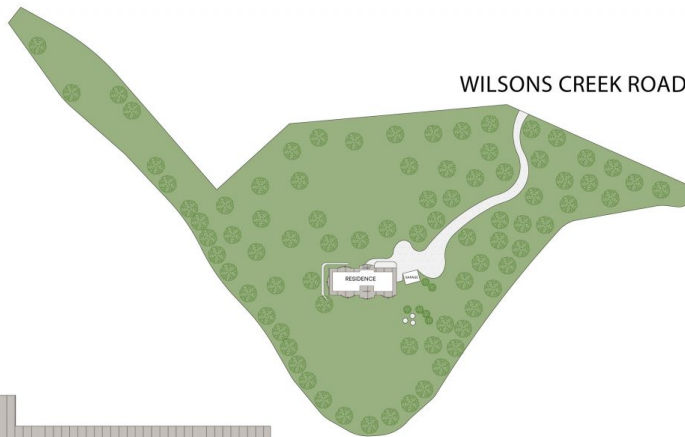
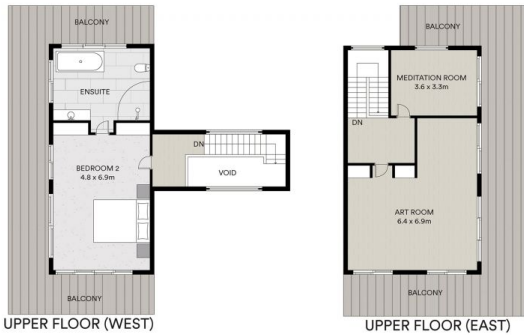


Will Phillips
02 6610 9892



Peter Randall
02 6610 9892

<https://www.byronbaysir.com.au>



INT : 506m²
 EXT : 369m²
 LAND : 2.8ha

Scale in metres. Indicitive only. Dimensions are approximate. All information contained herein is gathered from sources we believe to be reliable. However we cannot guarantee its accuracy and interested persons should rely on their own enquiries.

777 Wilsons Creek Road

Byron Bay | Sotheby's
 INTERNATIONAL REALTY

