

Byron Bay

Sotheby's

INTERNATIONAL REALTY



600 Coolamon Scenic Drive Coorabell NSW

4 🛏 2 🚿 4 🚗

Perched up high amid the natural splendour of the ancient escarpment with breathtaking valley views to the mountains and ocean, this quality-built homestead sits on a lush 2.25-acre estate surrounded by picturesque scenery. The residence has been upgraded to perfection and delivers a stunning ridgeline retreat in complete seclusion, with Byron Bay just over 10 minutes away.

This is a home that embraces easy living, entertaining and relaxing with a warm and inviting atmosphere achieved with a balance of light and space. Interiors enjoy a natural connection with the outdoors with rooms wrapped in large, covered verandahs that capture the far-reaching panoramas. There are four great-sized bedrooms, modern main bathrooms, separate laundry with storage room, a

[For full version visit the website](#)

Type : House
Price : EOI Guide on request, close Thurs 24th Oct 5pm
Land Size : 2.249 Acres
View : <https://www.byronbaysir.com.au/sale/nsw/northern-rivers/coorabell/residential/house/8134149>

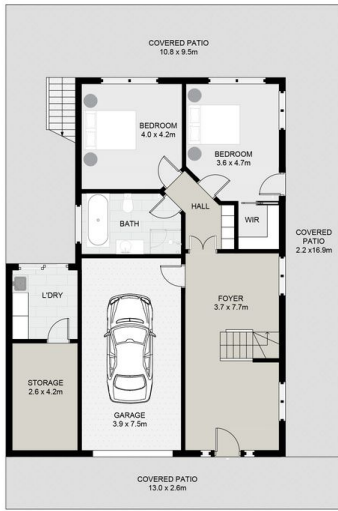


Will Phillips
02 6610 8892

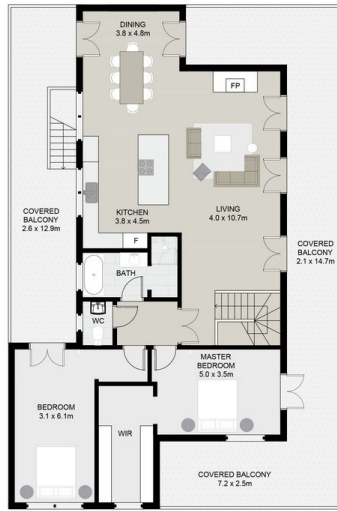


Peter Randall
02 6610 8892

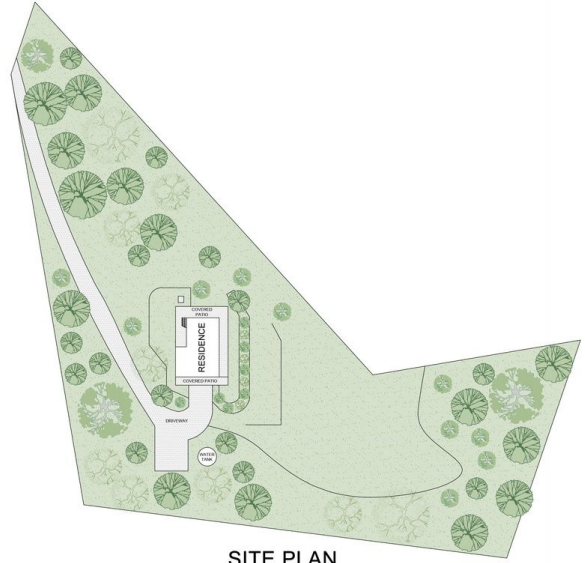
<https://www.byronbaysir.com.au>



GROUND FLOOR



FIRST FLOOR



SITE PLAN

INTERNAL AREA : 233M²
 EXTERNAL AREA: 252M²
 LAND AREA: 9,105.43M²

Scale in metres. Indicative only. Dimensions are approximate. All information contained herein is gathered from sources we believe to be reliable. However we cannot guarantee its accuracy and interested persons should rely on their own enquiries.

600 COOLAMON SCENIC DRIVE, COORABELL

Byron Bay | Sotheby's
 INTERNATIONAL REALTY

