



15 Bryce Street Suffolk Park NSW

4 2 2

A superb family package, this quality-built double brick home's generous accommodation, up-to-date finishes and great outdoor entertainment areas all highlight its excellent lifestyle appeal. A bright single-level layout has been designed to provide an easycare living environment where space, convenience and privacy all come together perfectly, plus it sits on a great-sized 720sqm garden landholding.

- Tastefully appointed and freshly designed four-bedroom family home
- Occupying a generous 720sqm level block with lush tropical gardens
- An extremely functional and easy-to-maintain single-level floorplan

[For full version visit the website](https://www.byronbaysir.com.au)

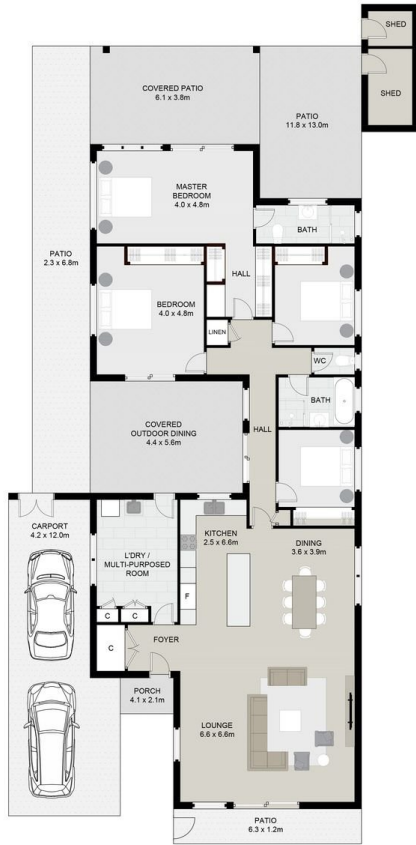
Type : House
Price : \$2,375,000 - \$2,600,000
Land Size : 720 sqm
View : <https://www.byronbaysir.com.au/sale/nsw/northern-rivers/suffolk-park/residential/house/8132097>



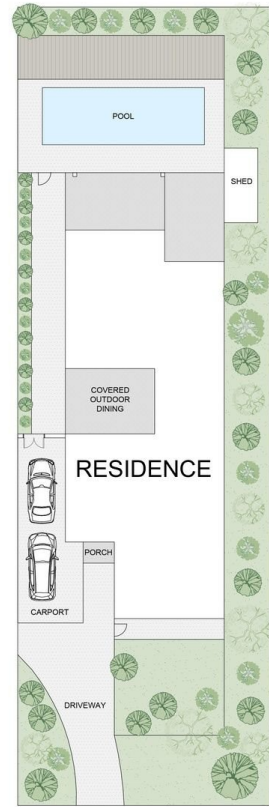
Will Phillips
02 6610 9892



Peter Randall
02 6610 9892



INTERNAL AREA : 185M²
 EXTERNAL AREA: 276M²
 LAND AREA: 720M²



SITE PLAN



Scale in metres. Indicative only. Dimensions are approximate. All information contained herein is gathered from sources we believe to be reliable. However we cannot guarantee its accuracy and interested persons should rely on their own enquiries.

15 BRYCE STEET, SUFFOLK PARK

Byron Bay | Sotheby's
 INTERNATIONAL REALTY