



18 Red Bean Close Suffolk Park NSW

4 🚗 4 🚗 6 🚗

Backlit by the sheer majesty of the Coopers Shoot escarpment, this spectacular rainforest-like compound unveils panoramic ocean views from its unmatched Suffolk Park vantage point. Encompassing an extraordinary 2.82 acres of pristine land bordered by the sandstone cliffs of the ancient ridgeline, this breathtaking property is home to one of the Byron Shire's finest private residences. Flowing over two exquisitely executed floors of living and entertaining space, an array of family areas spill out to a choice of covered terraces designed to maximise the connection to the landscape and highlight the sublime ocean panoramas. Fitted with every modern luxury including a sun-drenched, heated swimming pool, it promises a truly immersive experience just 4 mins to Tallow Beach and 7 mins to the heart of Byron Bay.

Type : House
Price : EOI guide \$4,800,000 - \$5,200,000
Land Size : 2.82 Acres
View : <https://www.byronbaysir.com.au/sale/nsw/northern-rivers/suffolk-park/residential/house/8117288>

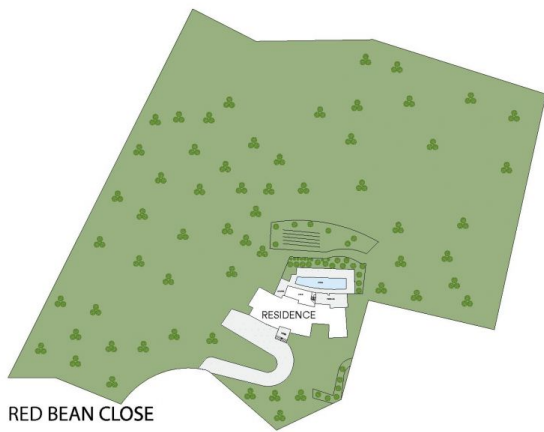


Brad Rogan
02 6610 9892



Will Phillips
02 6610 9892

[For full version visit the website](https://www.byronbaysir.com.au)

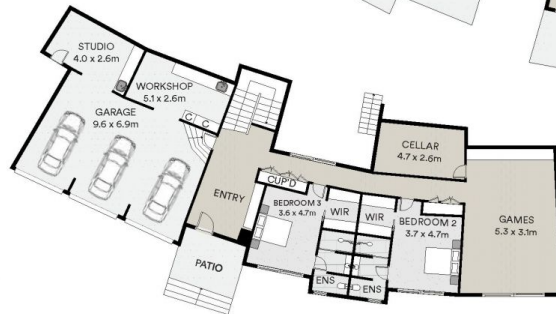


RED BEAN CLOSE

SITE PLAN



SECOND FLOOR



FIRST FLOOR



Scale in metres. Indicitive only. Dimensions are approximate. All information contained herein is gathered from sources we believe to be reliable. However we cannot guarantee its accuracy and interested persons should rely on their own enquiries.

18 Red Bean Close, Suffolk Park 2481

Byron Bay **Sotheby's**
INTERNATIONAL REALTY