



66 Lizray Road Federal NSW

10 8 2

One of the finest examples of rural luxury in the Byron Shire, 'First Light Farm' spans five magnificent acres with breathtaking hinterland, ocean and Cape Byron Lighthouse views. A highly flexible floorplan with endless opportunity, this hinterland sanctuary comprises an ultra luxurious five bedroom main residence, a three bedroom Queenslander-style 'West Wing' with oasis-like pool, plus a separate two bedroom cottage. Use the main dwelling as one grand 8 bedroom home, or use as 2 completely separate dwellings for multi-generational living or an excellent separate income stream plus the 2 bedroom cottage adds further opportunity. The estate has also been used as a zen-like family sanctuary with the space and ambience to accommodate yoga, meditation or creative retreats if desired. Just two minutes from the charm of

Type : House
Price : EOI guide on request
Land Size : 4.917397 Acres
View : <https://www.byronbaysir.com.au/sale/nsw/northern-rivers/federal/residential/house/8117269>

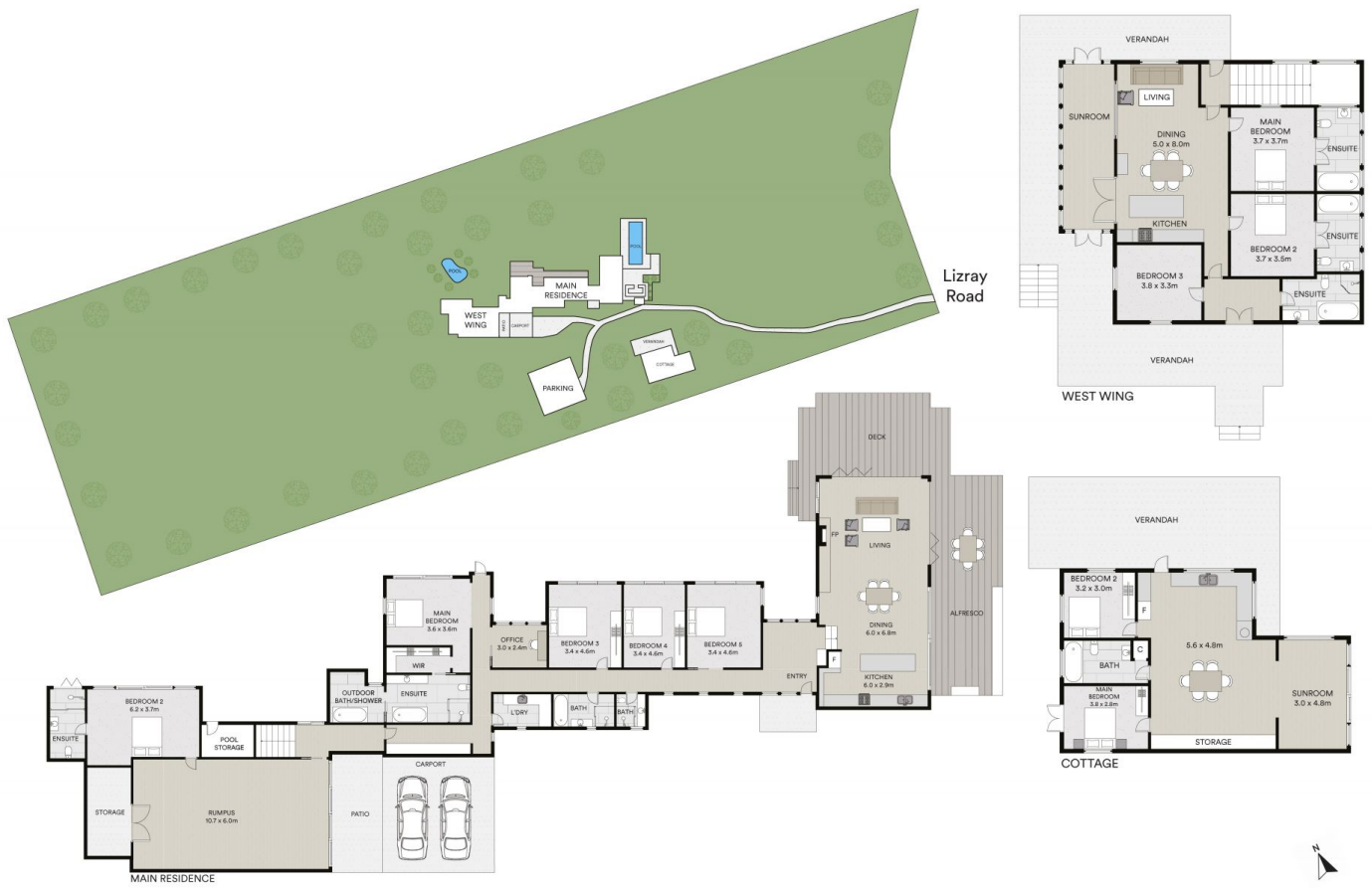


Will Phillips
02 6610 9892



Brad Rogan
02 6610 9892

[For full version visit the website](https://www.byronbaysir.com.au)



Scale in metres. Indicative only. Dimensions are approximate. All information contained herein is gathered from sources we believe to be reliable. However we cannot guarantee its accuracy and interested persons should rely on their own enquiries.

66 Lizray Road, Federal

Byron Bay Sotheby's
INTERNATIONAL REALTY