



15 Valley Court Ewingsdale NSW

4 2 5

Upon stepping into this magnificent residence, you are welcomed by meticulously crafted garden vistas, creating a private estate like sanctuary. Resting on 5552m², this home offers a blend of Modern Federation and architectural detail with its grand design, spacious layout with tropical pool oasis. Nestled in an exclusive enclave of Ewingsdale, this serene property is conveniently located. The ideal lifestyle sanctuary all within 5 minutes of the pristine beaches and local amenities of Byron Bay.

- Built over 2 storeys, designed with space and comfortability for easy living
- Generous floorplan includes a well-appointed country-style kitchen with premium finishes, the perfect space for culinary endeavors

[For full version visit the website](https://www.byronbaysir.com.au)

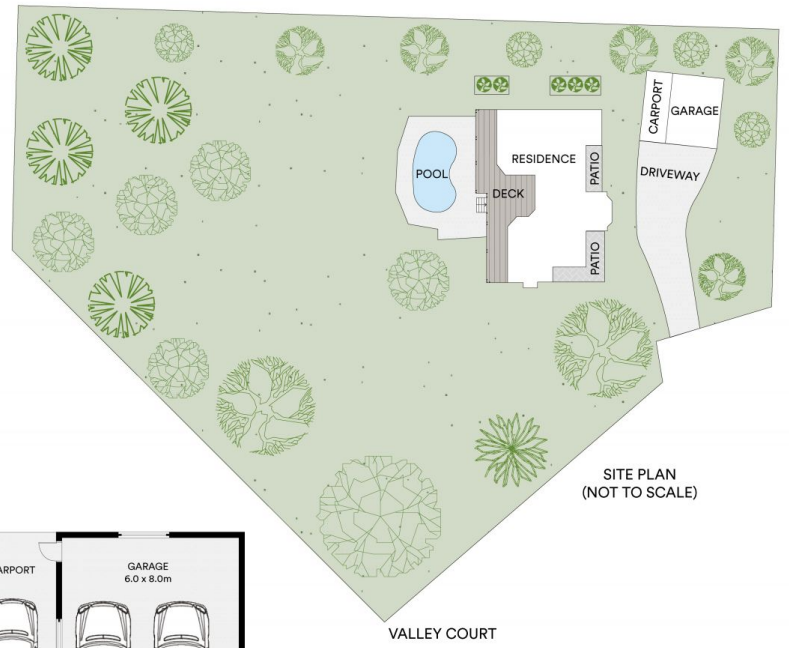
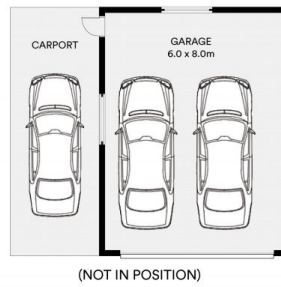
Type : House
Price : Guide \$2,600,000 - \$2,800,000
Land Size : 5552 sqm
View : <https://www.byronbaysir.com.au/sale/nsw/northern-rivers/ewingsdale/residential/house/8117265>



Brad Rogan
02 6610 9892



Peter Randall
02 6610 9892



0 1 2 3 4 5

LAND SIZE : 5,552 M²

INTERNAL AREA : 285 M²

EXTERNAL AREA : 124 M²

All information contained in this document is from sources we believe to be accurate, however we cannot guarantee its accuracy. Interested persons should make and rely on their own enquiries in relation to measurements, dimensions, layout, furniture and description.