

# Byron Bay

# Sotheby's

INTERNATIONAL REALTY



## 151 Ashbrookes Road Mount White NSW

8 5 7

Nestled just 13 km from the Hawkesbury River and 3 km from the M1, this 22.5-acre property features an architecturally designed, north facing home with well-established gardens.

The contemporary homestead provides luxury country living and cleverly blends multiple indoor entertaining areas with an outdoor alfresco dining space equipped with a pizza oven.

Four generously proportioned bedrooms with large windows and mirrored wardrobes reflect the gardens beauty. There's a guest wing, 3 bathrooms, billiard room and a large open plan living room featuring high ceilings, skylights, reverse cycling air conditioning and a Jetmaster fireplace.

**Land Size** : 9.11 ha

**View** : <https://www.byronbaysir.com.au/sale/nsw/central-coast-region/mount-white/residential/rural/7809082>

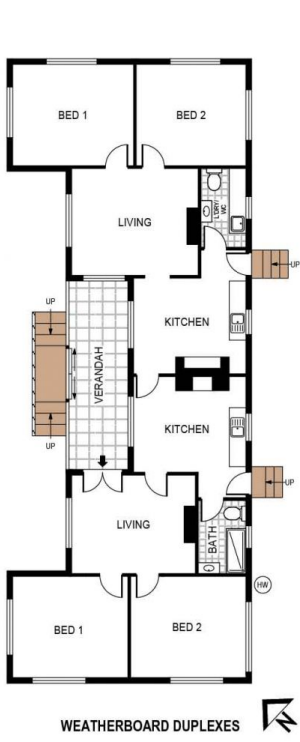


**David Medina**  
02 8355 6783



**James McCowan**  
02 8355 6783

<https://www.byronbaysir.com.au>



N  
FLOOR PLAN

PLANS SHOWN ONLY INDICATIVE OF LAYOUT. DIMENSIONS ARE APPROXIMATE.  
Ref. No: 106711

151 Ashbrookes Road, Mount White